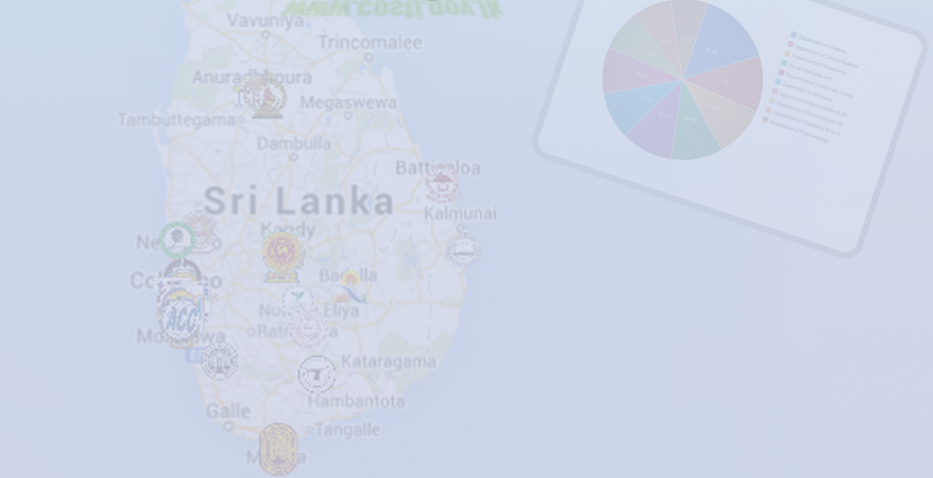


SRI LANKA INNOVATION DASHBOARD



**Coordinating Secretariat for
Science, Technology and Innovation**

The COSTI Channel



විද්‍යා, තාක්ෂණ හා නවෝත්පාදන සම්බන්ධීකරණ ලේකම් කාර්යාලය
 விஞ்ஞானம் தொழில்நுட்பம் மற்றும் புத்தாக்கத்திற்கான இணைப்புச் செயலகம்
Coordinating Secretariat for Science, Technology and Innovation

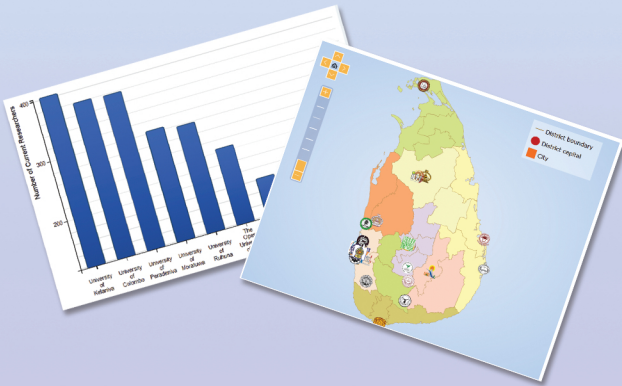
3rd Floor, Sethsiripaya - Stage I, Baththaramulla
 Phone : +94 (0) 112 445 207 : +94 (0) 112 448 671 Fax : +94 (0) 112 354 566
 E-mail : info@costi.gov.lk Web : http://costi.gov.lk

Visit us at: <http://dashboard.costi.gov.lk>

Purpose

The purpose was to establish a system that can:

- Provide information about the current status of the country, with regard to Science, Technology and Innovation.
- Portray a true picture of Sri Lanka's research and innovation space.
- Break the barrier of data inaccessibility and will be an inspiration in promoting a culture of data sharing.
- Can combine multiple data sources to create unique insights.
- Can assign the data to visualizations for easy understanding.
- Create a platform to initiate an Open Data Culture.

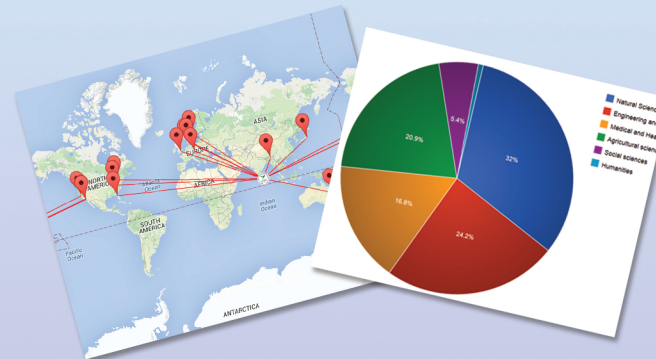


Benefits

The Dashboard and the underlying database will serve to:

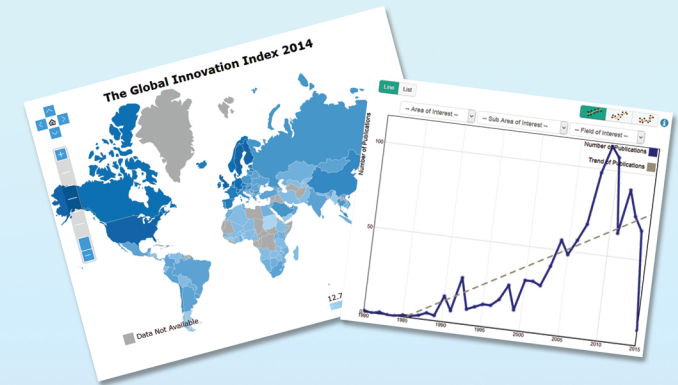
- Ensure establishment, maintenance and delivery of stable, reliable, and accessible collections of Institutional and people Data in electronic form for shared access by the community.
- Maximize the value of research data by increasing the understanding of the collected Data.

- Provide an integrated view of national research outputs.
- Improve direct access to research Data for end-users.
- Provide a vital platform for networking for those involved in (ST&I).
- Provide valuable input to industry experts on what to avoid and where to channel their limited resources and how to align with existing resources to ensure better end results.
- Provide high-level visibility to the utilization of national funds, and projects.
- The National ST&I strategy by providing national ST&I information that can be an integral Support part of decision-making, competitive positioning, and focus on value-adding areas.



The Dashboard will facilitate answers to all kinds of questions sought by users, such as:

- Is this technology area worth pursuing?
- Has anyone done a similar project?
- Who or which organization can I collaborate with?
- What are possible sources of funds?
- What are the publications written and patents granted in this area which I can refer to?

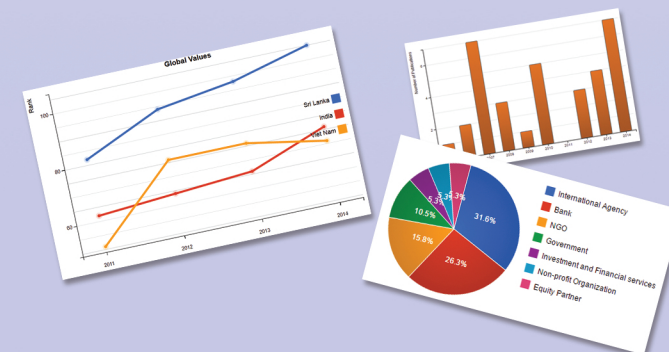


Access

The system is designed to be interactive. The information is presented using customizable gadgets. The information can be accessed via the Innovation Eco System elements (Publications, People, Position, Patents, Partnerships, Places, Financing, and National Research Repository) or the 4 dashboards provided (General, Academic & Research, Decision Makers, and Business).

A few of the attractive features are: Searchability, drill down capability, create and maintaining your own profile (individual and organizational), and creating your own dashboard.

Sri Lanka Innovation Dashboard is licensed under the following creative commons attribution. Creative Commons Attribution-NonCommercial-ShareAlike 4.0 International License.



For further information: dashboard@costi.gov.lk